

POLISHING SYSTEMS

Eisinger Presents Smart Polishing Systems

Smart Design. From the sturdiness of the solid steel legs and thick wooden tabletops to the aerodynamic design of the hoods — we are committed to maximizing comfort and efficiency.

Let Us Custom Design a polishing system to suit your needs for any combination of polishing, lapping and grinding.

Custom Designed Baldor Motors

Features:

- Inside threaded spindles and matching motor shafts for absolutely true rotation
- Totally sealed motor case with self lubricating ball bearings
- Maintains cool and quiet operation during non stop use
- Automatic cut-off for easy stopping of rotation
- Made in the USA



Variable Speed Motor

42-139

Powerful high torque 1/4hp variable speed, double spindle motor is ideal for grinding and texturing. Permanently lubricated ball bearings and completely enclosed housing insure maintenance free operation. Includes 2 slip-on spindles

Dimension: 13 1/4" w x 7 1/2" d x 5 1/4" h
(349 x 191 x 133mm)
(width is spindle tip to spindle tip)
Shipping wt: 30lbs (13.6kg)

HP	Order #	Spindle Thread	Volts	Energy Phase	Amperage
1/4	42-121	Right	110/220	1	7/3.5
1/4	42-122	Left	110/220	1	7/3.5
1/4	42-126	Double	110/220	1	7/3.5
3/4	42-131	Right	220/380	3	2/1.2
3/4	42-132	Left	220/380	3	2/1.2

All motors run at 3450rpm at 60hz; 2875rpm at 50hz
Shipping weight: 45lbs (20.5kg) each

Baldor Double Spindle 2 Speed Polishing Lathe

42-138

This 2-speed motor runs at 3450 rpm and 1725 rpm making it useful for grinding, polishing and texturing of all metals. It features true running, quick change tapered shafts, 1/4hp, 5 1/4" (133mm) shaft height.

Shipping weight: 42lbs (20kg)

Purchase spindles separately, see page 97

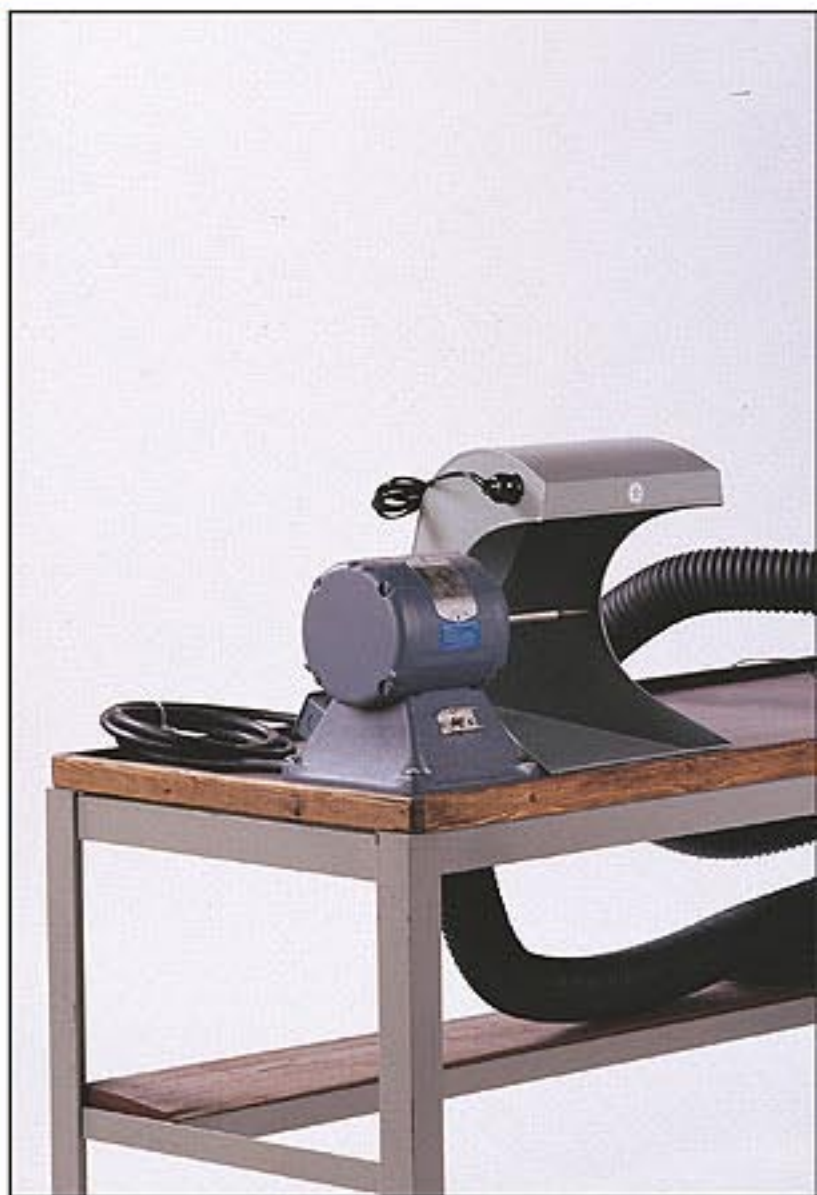


Eisinger® Polishing Accessories

	Order #
Polishing hood socket and cord	42-301-1
Blue light bulb	42-301-2
Fluorescent tube	42-306-1
Hood screen, coarse	42-410
Hood screen, fine	42-411

Eisinger® Installation Accessories

	Order #
Flexible polishing hose-3" I.D. (sold by the foot)	42-401
Hose Clamp	42-404
Inlet collar for dust collector	42-405
Y Branch	42-406
Cut out	42-407



Standard Polishing Hood

42-301

Supplied with two light sockets, cords (110V) and hood screen.



Dimensions: 12¹/₄"w x 16"d x 14³/₄"h
310 x 410 x 370mm

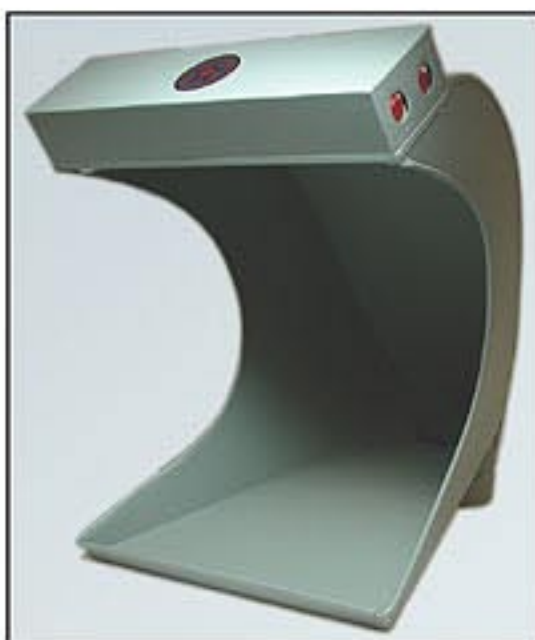
Shipping wt: 7lbs (3.2kg)

Adjustable Hood Shield

42-301-3

For Osha compliance and safety. Clear acrylic. 9"h x 6"w, 1/8" thick shield protection.

For installation on your present hood.



Fluorescent Polishing Hood

42-306
Fluorescent lights provide a cool and non-glare light source. Includes two 6 watt tubes (110V).

Dimensions: 12¹/₄"w x 16"d x 14³/₄"h
(310 x 410 x 370mm)

Shipping wt: 8lbs (3.6kg)



Locking Grinding Box

42-307
Locking lower drawer safeguards collected gold grindings. Includes fluorescent light fixture and key.

Dimensions: 16"w x 18"d x 16"h
(410 x 460 x 410mm)

Shipping wt: 27lbs (12kg)



StarLeaf[®] Visilap Hood

42-303

For lapping stations. With 3" (76.5mm) hose outlet.

Dimensions: 10¹/₄"w x 12"d x 12"h
(270 x 300 x 300mm)

Shipping weight: 5lbs (2.3kg)

Eisinger[®] Polishing Tables

Our popular tables are made of 1" (25mm) thick wood grain laminant mounted on heavy-duty angle iron steel legs.

Available in Sizes (wxdxh)	Order #	Shipping Weight
24" x 24" x 28" (610 x 610 x 711mm)	42-112	120lbs (55kg)
48" x 24" x 28" (1220 x 610 x 711mm)	42-114	240lbs (110kg)
60" x 24" x 28" (1524 x 610 x 711mm)	42-115	265lbs (120kg)

Custom sizes are available upon request.

StarLeaf® Lapping Stations

Lapping makes use of beveled and split wheels to speed up the cut down process. Wheels are mounted horizontally on an upright spindle at a 60° angle. At high speeds, wheels become see-through as one works on the jewelry below.

StarLeaf® Visilap
Benchtop Model

42-150

Compact and economical unit includes motor, hood and lamp. 3" (76.5mm) outlet for dust collector hose connection. 3450rpm.

SPECIFICATIONS:

Dimensions: 14"w x 14"d x 18"h (36 x 36 x 457mm)

Motor: ¼hp, 115V, 4 amps

Shipping weight: 46lbs (21kg)

Also available – ¼hp, 230V, 1phase – 42-150-1V and
¼hp, 230V, 3 phase – 42-150-3V

Visilap and Visimount are used with L.H. Tapered Spindle or
L.H. Flanged Arbor - See page 97

StarLeaf®
Visimount
Floor Model

42-361

Baldor motor with true running, inside threaded shaft mounted on a solid table with hood and goose neck lamp. 3450rpm.



SPECIFICATIONS:

Dimensions: 24"w x 24"d x 28"h (height of table surface.)
(610 x 610 x 711mm)

Motor: ¼hp, 110V, 4 amps (220V available)

Shipping weight: 160lbs (73kg)

Also available – ¼hp, 220V, 3 phase, 2 amps – 42-361V-3V

Heavy-Duty Bench Top Polisher
42-770

Top of the line bench top model

Features:

- ¼hp open motor
- Heavy-duty suction motor and fan
- Well sealed cabinet for higher suction efficiency
- Built-in dual light source
- Made in the USA

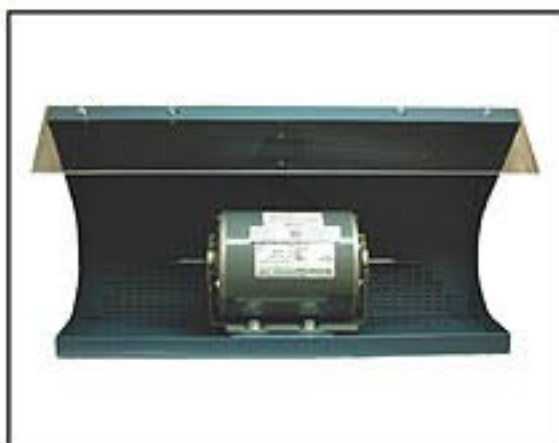
SPECIFICATIONS:

Dimensions: 33¼"w x 22"d x 11"h (851 x 559 x 280mm)

Energy: 120V, 60hz

Ship wt: 78lbs (35kg)

42-770-1 – Replacement Filter – 32"w x 10"d x 2"h
(813 x 254 x 51mm)

Compact
Bench Top
Polisher

42-773

Our economical double spindle unit comes complete with a ¼hp double spindle motor, suction fan, motor and light.

SPECIFICATIONS:

Dimensions: 20¼"w x 19¼"d x 12"h (515 x 495 x 305mm)

Energy: 120V, 60hz

Shipping weight: 64lbs (29kg)

Replacement Filter – 42-773-1

Single Spindle Bench
Polisher

42-772

The unit is ideal for small shops or where limited space is available. This small polisher/dust collector has many of the features of the larger units—suction motor, work light, ¼" tapered spindle and replaceable fiber-glass filter. Accommodates buffs up to 5".

SPECIFICATIONS:

Dimensions: 15¼"w x 17"d x 10¼"h (390 x 432 x 260mm)

Energy: 110V, ½hp, 5.2amps, 3450rpm

Shipping weight: 40lbs (18kg)

42-772-1 – Replacement Filter – 9¼"w x 12¼"d x 2"
(248 x 324 x 51mm)



StarLeaf[®] Self Contained Workstations

We can accommodate your polishing needs with motors and hoods mounted directly on our dust collectors. This makes an efficient work station which requires less space.



Whirlwind Jr.

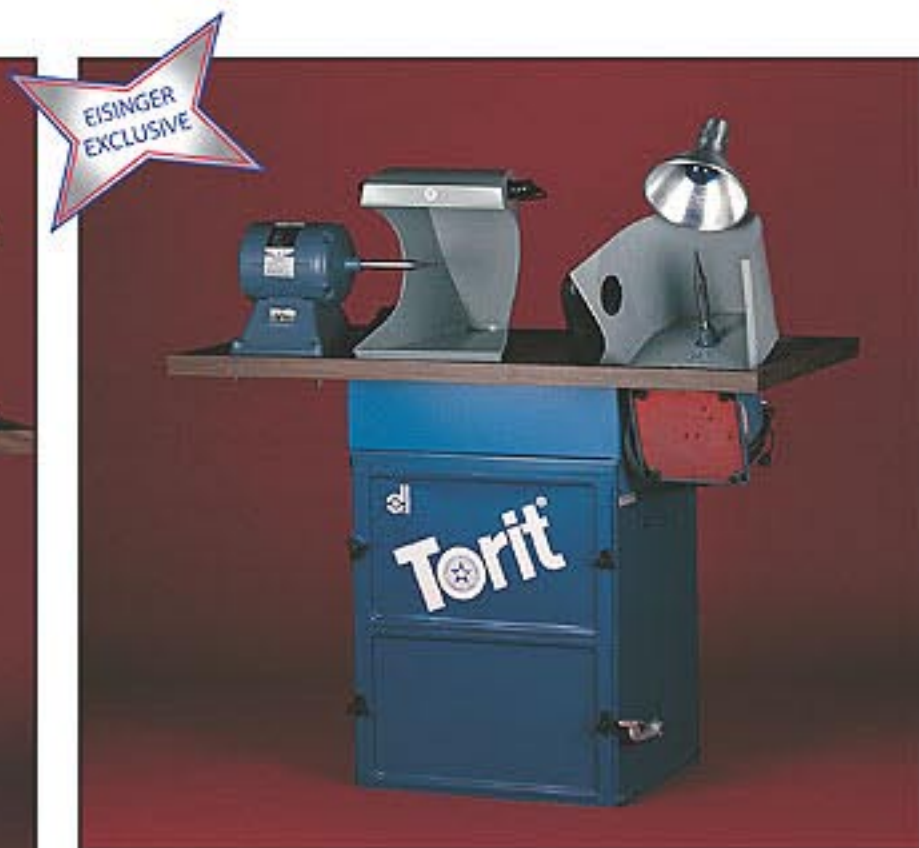
42-366

Comes standard with two single spindle right hand motors mounted directly on a 1" (25mm) thick table atop our #54 Torit dust collector (*see page 91*). This station uses minimal space yet has excellent suction; a well designed comfortable work station. Can also be designed with one polishing and one lapping station 42-357 or one grinding and one polishing station 42-368 or with one double spindle motor 42-369 all mounted directly on our #54 dust collector.

SPECIFICATIONS:

Polishing/grinding motors*:	1/4hp 1-ph 110/220V, 50/60hz
Amperage:	7 at 110V, 3.5amps at 220V
Dust collector motor*:	1/4hp 1-ph 110/220V, 50/60hz
Amperage:	7 at 110V, 3.5amps at 220V
Floor Dimensions:	22" w x 19" d (56 x 49mm)
Work surface:	48" w x 27" d x 33" h (122 x 69 x 84mm)
Shipping weight:	320lbs (145kg)

*Other currents available upon request.



Whirlwind Compact

42-365

We use our excellent Baldor double spindle motor mounted on a 1" (25mm) thick table atop our Mini Dust Collector (*see page 92*). This is our most economically priced professional polishing system.

SPECIFICATIONS:

Polishing/grinding motors:	1/4hp 1-ph, 7 amps, 110/220V, 50/60hz
Dust collector motor:	1/4hp 3.5amps, 110/220V, 50/60hz
Floor Dimensions:	15" w x 14 3/4" d (381 x 375mm)
Work surface:	24" w x 40" d x 30" h (61 x 102 x 76mm)
Shipping weight:	270lbs (122kg)

Whirlwind Spindles and Arbors

Inside threading and taper of spindles match the threaded motor shaft.



- Threaded Tapered Spindles are for securing pin-hole center wheels and chucks. For securing 1/4" (12.7mm) center holes.
- Right hand Flanged Arbor are for securing 1/4" (12.7mm) center holes. Left hand Flanged Arbor and Left hand Tapered Spindle are used with lapping machines.
- Chuck is variable jaw to hold tools up to 1/4" (6.3mm) shank.
- Use Combination Spindle/Arbor to save time by mounting 2 wheels/buffs at a time.

Type	Right Hand	Left Hand
Tapered spindle	42-201	42-202
Flanged arbor	42-231	42-232
Combo spindle/arbor	42-240	
Jacobs chuck	42-241	

StarLeaf[®] Spindles for Tapered Shaft Motors

For use with tapered shaft motors

- 42-211 – Right Hand
- 42-212 – Left Hand



Spindles and Arbors with Side Screws

For use with any standard motor.

Shaft Diameter	Type	Right Hand	Left Hand
1/4" (12.7mm)	Tapered spindle	42-215	42-216
	Flanged arbor	42-245	42-246
3/8" (15.8mm)	Tapered spindle	42-217	42-218
	Flanged arbor	42-247	42-248

Eisinger[®] Chucks & Mandrels for Polishing Motors



Chucks

Screws onto tapered spindles holding tools with 3/16" (2.35mm) shanks.

42-603 – Steel Handy-Accepts 3/16" (2.35mm) shank.

Length 3" (76mm)

42-605 – Wood Handy

Chuck opens from .085" to .128" (2.1 to 3.25mm).

Length 3 1/4" (89mm)

Replacement Collet Only 42-605-1

Emery Paper Wood Mandrel

42-619

Screws onto tapered spindles. For wrapping emery paper to smooth the insides of rings.

MS Spindles

Screws onto tapered spindles. Holds MS brushes (1/8" hole).

Available in:

42-611 – Plastic-Right Hand

42-612 – Plastic-Left Hand

42-613 – Wood-Right Hand

Mounted Mandrel

42-618

Screws onto tapered spindles, holds unmounted pinhole centered wheels and brushes. With threaded screw-on 3/16"



StarLeaf[®] Wood Ring Polishing Sticks

Screw onto tapered spindles. Small is used to hold emery shells. Medium and Large hold rings while polishing.

Size	Order #	Length	Widest dia.	Shipping Wt (Per dz)
Small	42-661	4 1/4" (108mm)	3/4" (21mm)	2lbs (1kg)
Medium	42-662	6" (152mm)	1" (25mm)	4lbs (2kg)
Large	42-663	7" (178mm)	1 1/4" (29mm)	5lbs (2.5kg)